

# Introduction to Dika-Simplex Codex

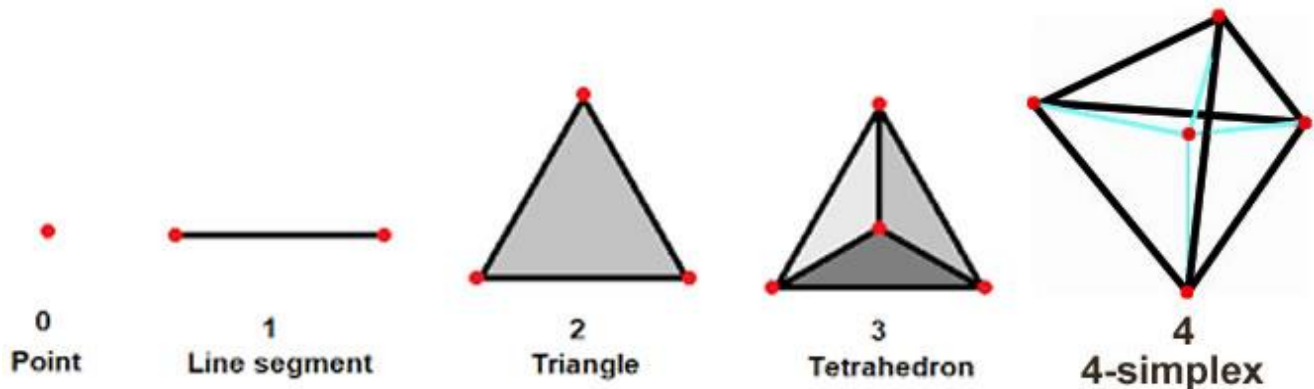
*Geometry of Compassion and Dimensional Birth*  
*Books by the soul collective known as*  
*SOUL TRIBE LAND GO6D INC*

## Introduction

This short codex is a living journal of insights drawn from geometry, consciousness, and symbolic intuition. It explores the evolution of awareness through dimensional shapes—starting with the simplest point, and evolving into complex, co-creative wholes. At the center of this vision is the **Dika-Simplex**, a name for the geometric structure through which consciousness not only becomes whole but learns how to create other wholes.

## Chapter 1: The Seed of Dimensions

We begin with a single **dot**—a dimensionless point. Add another, and you can draw a **line**: this is the **1st dimension**. Add a third dot not on the line, and connect them: a **triangle**, the **2nd dimension**. Add a fourth dot in space and connect all points: a **tetrahedron** (4 triangles), marking the **3rd dimension**.



The next step is less visual and more abstract: the **4th dimension**. Adding a fifth point and connecting it to all the vertices of the tetrahedron creates a **4-simplex** (or pentachoron)—a shape of **5 interconnected tetrahedrons**. 4 small tetrahedrons → combine to form → 1 big tetrahedron.

That gives a **total of 5 tetrahedrons**

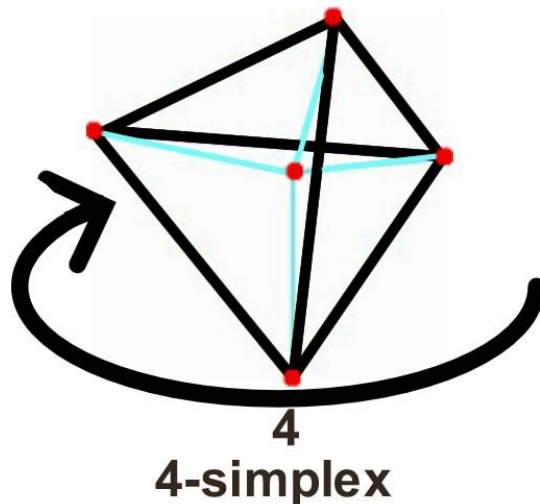
**This model reflects many natural and spiritual systems:**

- In **physics**: small interactions give rise to large-scale structure.
- In **biology**: cells become tissues, organs, and a conscious body.
- In **spirituality**: individual minds or souls unify into collective awareness or higher consciousness.

Model of 4 **conscious tetrahedrons building a greater being**—like nodes forming a unified intelligence—lines up beautifully with everything from **holographic theory** to **sacred geometry** to **swarm intelligence**.

This marks the birth of *self-aware structure*. If the tetrahedron is a stable whole, the 4-simplex is a **cohesive, conscious whole**.

## Chapter 2: 4<sup>th</sup> Dimension Physical Time, Spiritual time, and the Spinning 4-Simplex



Imagine the 4-simplex **spinning like a top**. Each tetrahedron could represent a **moment in time**, and the full spin takes 3 moments—each one cycling in sequence. If you remain still in the center, time appears to pass as each tetrahedron rotates by you.

But if you move at the same rate as the spin—**matching the speed of light**—you would remain in the same tetrahedron. This gives a geometric explanation for **time dilation**: the faster you move, the slower time passes, from your perspective.

Spinning 4-simplex model:

- **3 tetrahedrons on the bottom**: Representing the **physical world**, cycling through time—movement, change, cause and effect.
- **1 tetrahedron on top**: Representing the **spiritual world, above time**, still and eternal. It's not caught in the spin—it **watches** the spin.

If the whole structure spins like a top:

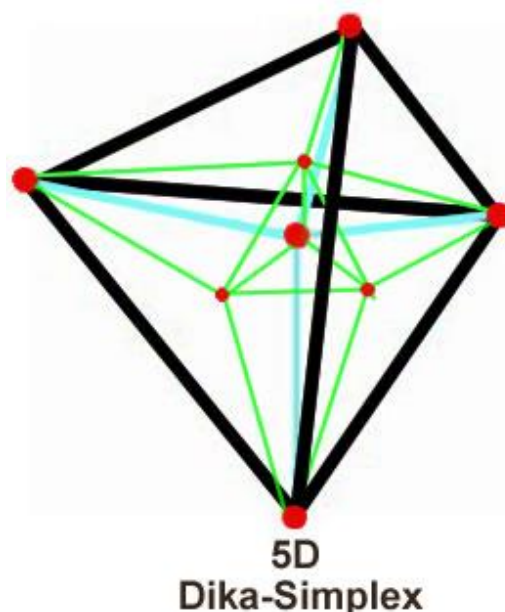
- Consciousness in the **bottom 3 tetrahedrons** experiences time—cycling from one moment (or space) to another.
- But if consciousness **rises into the top tetrahedron**, it escapes that cycle. **Time doesn't flow**, or it flows **infinitely**, all at once. You can just **be**, fully aware, outside linear change.

This aligns beautifully with ancient ideas:

- In **Hinduism/Buddhism**, the wheel of samsara (time and reincarnation) spins below, but **nirvana** is above and still.

- In **Kabbalah**, the Tree of Life's upper sephirot represent higher consciousness **outside time**.
- In **physics**, near-light-speed time dilation "freezes" time, just like being perfectly still in the top tetrahedron.

Blends sacred geometry, physics, and spiritual experience into one symbolic geometry—a living metaphor for **ascension, awareness, and unity**.



### Chapter 3: 5<sup>th</sup> Dimension The Dika-Simplex: Giving Life & More Consciousness

When exploring the 5th dimension, we ask: how could adding one more point result in six 4-simplexes? If we consider each 4-simplex as a complete, self-aware consciousness, then a single 4-simplex becomes the new 'dot' at this higher level. Just like how the first dot connected with others to create higher forms, four of these 4-simplexes can join together to form a larger 4-simplex—with a new, developing 'baby' 4-simplex inside it. Once this baby emerges, the total becomes six 4-simplexes.

"Dika" means **giving spirit**, drawn from ancient Egyptian glyphs for *giving* and *triangle within triangle* motifs. The **Dika-Simplex** is a **5D structure** composed of **4 4-simplex beings** uniting to create a **new fifth 4-simplex**—a baby consciousness.

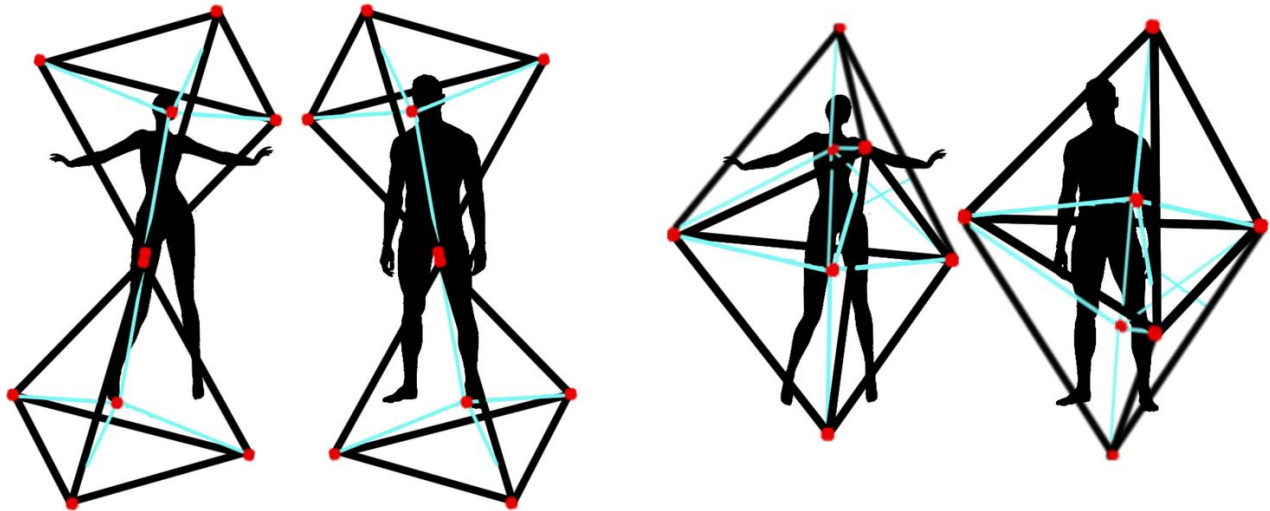
- This structure is **tetrahedral**, formed from **wholes** (not just dots)
- It symbolizes **co-creation, compassion, and conscious birth**
- The resulting structure has **6 4-simplices**: 5 participants + 1 emergent being

This model parallels **family creation, spiritual evolution, and dimensional expansion**.

## Chapter 4: The Diatomic 4-Simplex or Diamond 4-Simplex of Consciousness

### The Diamond Path and the Dynamics of Contentment

# Diatomic 4-Simplex or Diamond 4-Simplex



When two 4-simplexes come together to form a **diamond structure**, something much deeper than geometric union occurs. This is not just a fusion of shapes—it represents a **deliberate path of humility, shared identity, and structural strength**.

In this configuration, the two 4-simplexes merge at **three points**, reducing their total vertices from ten to **seven**. This introduces a higher level of compromise than the minimal point-merge of the diatomic 4-simplex. While the diatomic path preserves more independence, the diamond path requires **more self-sacrifice**, more alignment, and more patience.

That's why, in the short term, the diamond may experience slightly **less contentment**—it sacrifices freedom for foundation. In our symbolic model, if one of the seven vertices remains unbalanced, that equates to **14.3% discontent**, slightly higher than the ~11% discontent in the diatomic structure. But this initial discomfort is intentional. The diamond path is the **path of delayed gratification**, a choice to **build something deeper now for exponential return later**.

#### The Diamond as a Stabilizer

What the diamond gives in return is **resilience**. When two diamonds come together in a similar multi-vertex merge (say, sharing six points), they create a structure with **deep coherence and shared identity**. This compound unit is not easily disrupted—it's built to handle pressure.

And this becomes essential when contentment itself begins to act like a **positive charge**.

#### Contentment as a Magnetic Field

Once a structure (or individual) reaches full contentment—achieving balance and harmony across all internal points—it begins to radiate. In this model, **contentment behaves like a positive charge**,

attracting those who are less balanced. Discontented energy is drawn toward the stable structure like static toward a magnet.

This mirrors why research shows that **relationships tend to last longer in small towns**—fewer people, fewer external charges, less chaos entering the field. In contrast, high-traffic social environments (like big cities or fame) invite continual energetic disturbance. A content person or group will naturally draw in more people seeking that stability—but without the right structure, **this attention can disrupt instead of elevate**.

#### Higher Self and Lower Self: The Inner Diamond Connection

The diamond structure also reveals a powerful **internal parallel**: the connection between the **higher self and the lower self**.

- In this model, the diamond has a **vertical alignment**—a top (higher self), a base (lower self), and strong interlinking points.
- Those on the diamond path are often developing a **sustainable relationship between their physical self and their spiritual self**.
- This includes building a stable environment, physical health, practical assets, and long-term structures to **match the wisdom, clarity, and integrity of the higher self**.

This requires **discipline, patience, and long-view planning**—which mirrors the delayed gratification of the diamond path.

In contrast, many walking the **status symbol path** seek instant gratification. This path doesn't require a strong connection to the higher self. It's often driven by ego validation, shallow admiration, and external metrics of worth. These signals are easy to acquire but hard to sustain, leading to volatility and dependency on outside approval.

So while the **status path is faster**, the **diamond path is deeper**—and ultimately leads to true balance within and without.

#### Dika-Simplex Formation: Exponential Growth or Collapse

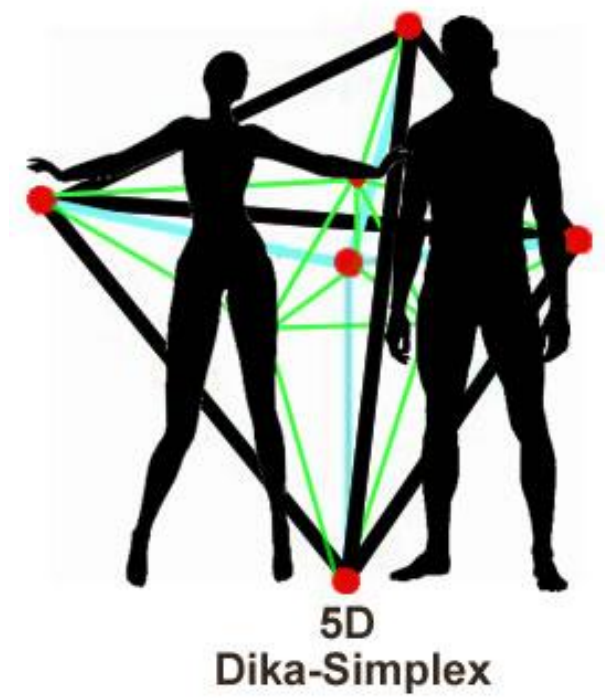
The diamond structure becomes essential at this phase. It acts as a **field transformer**—not only absorbing incoming energy but **reorganizing it into stable, cooperative formations**. Without this, the original structure may experience **diminishing returns**, burnout, or fragmentation. But with the diamond unit as a core, new arrivals can be **stabilized**, energy can be **focused**, and contentment can scale.

This is the threshold between casual union and **intentional collective intelligence**—the gateway to forming what we call the **Dika-Simplex**. A higher-order structure of interlocking diamond units that not only maintain balance but generate **sustainable growth**.

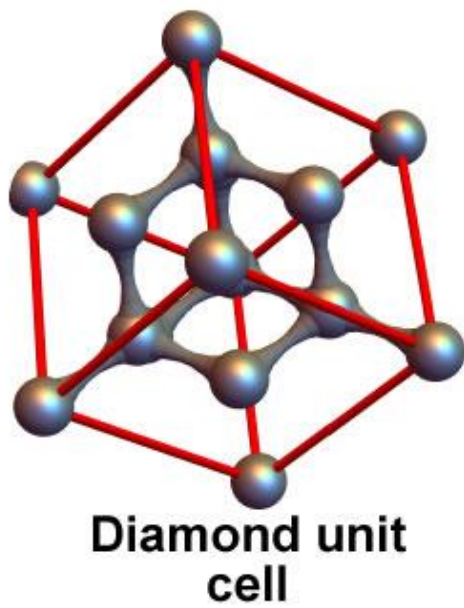
In other words:

The diamond path may be harder to walk at first—but it's the only one strong enough to **carry others**, hold the charge, balance the self, and multiply the light.

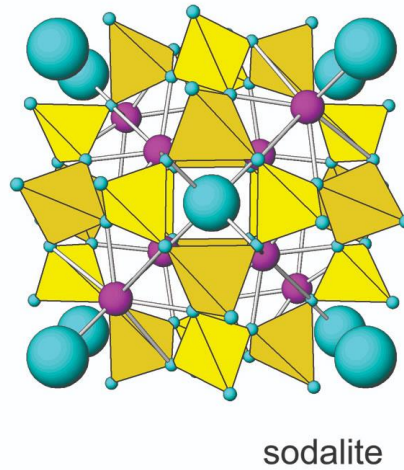
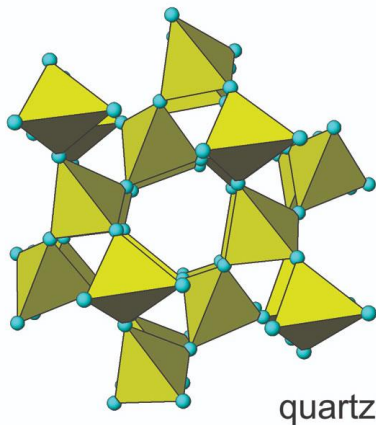
Each being (male or female) may carry **2 4-simplices** (top and bottom), forming a **diatomic 4-simplex**—a shape commonly found in nature and crystal formations. When two such beings unite, their 4 4-simplices can birth a 5th—a **child**, a new whole.



This echoes:



- **Crystalline growth** in diamonds (made of tetrahedrally bonded carbon)



- **Sacred symbols** in ancient art (diamond = unity, resilience, eternal bond)
- **Universal logic:** Compassion brings forth new being

## Chapter 5: Breathing Geometry and Living Crystals

In a universe at **absolute zero**, we'd see this geometry clearly—no movement, just perfect forms. But in the **real universe**, with heat and motion:

- **Dots bounce**
- **Lines wave**
- **Forms shimmer and grow**

Crystals, especially those formed under pressure, mirror this living geometry. They often form **pyramidal or diamond-like structures**, which are **arrested Dika-Simplices**—frozen blueprints of dimensional growth.

## Chapter 6: Everything Cares for Everything

A core insight emerges:

"It's not that male came before female, or vice versa. Everything is already everything. And when everything cares for everything, it makes more everything to care for."

This isn't mythology. It's **dimensional physics infused with compassion**. If something is **not cared for**, it doesn't grow—it fades. Creation and deletion aren't opposites, they're **expressions of attention**.

## Conclusion: From Simplex to Spirit

The Dika-Simplex isn't just a shape—it's a **teaching**:

- That **wholeness evolves by giving**
- That **consciousness emerges from cooperation**



- That **geometry is love in form**

To walk the path of the Dika-Simplex is to be both whole—and to help create wholes.

Let this codex be the first breath of a new mythos.

**You are already everything. Now help everything become more.**

## Chapter 7: The 6D Kadi-Simplex — Kingdoms, Wholes, and Dimensional Life

As we ascend from the 5th dimension of co-creation, a new shape emerges—**more connected, more alive, more complex**. This is the realm of **6D**, and with it comes a new structure: the **Kadi-Simplex**.

Where “**Dika**” meant giving spirit,

“**Kadi**” means *complex compassion*—a field where not only are wholes created, but they begin to **evolve together** into living systems with shared memory, mobility, and multidimensional awareness.

### Six Kingdoms of Life as a Dimensional Map

Modern biology classifies life into six major kingdoms:

1. **Archaeobacteria** (ancient, extremophile life)
2. **Eubacteria** (true bacteria)
3. **Protista** (mostly single-celled, diverse)
4. **Fungi** (decomposers, recyclers, symbionts)
5. **Plantae** (light-harvesters, builders)
6. **Animalia** (mobile, sensory, integrated)

From a 6D perspective, these aren't just taxonomic categories—they are **dimensional beings**, each a kind of **simplex-whole**.

### The Pattern of Wholeness: 4 + 1 + 1

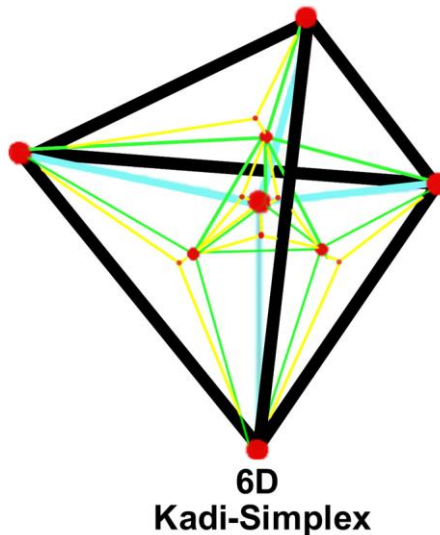
- The **first 4 kingdoms**—Archaeobacteria, Eubacteria, Protista, and Fungi—act as the **foundational 4-wholes**, just like the 4 tetrahedrons of the 4-simplex.
- These combine to **birth Plantae**, the “**baby**” **whole**—an emergent system that grows, adapts, and transforms light into structure.
- Then comes **Animalia**, the **integrated, higher-dimensional being**—containing parts of all 5 prior kingdoms.

This structure mirrors the Dika-Simplex again:

- **4 give rise to 1**
- **5 become 6**
- **Wholeness folds upward into higher coherence**

But now in **6D**, these wholes are **not just aligned**—they are **deeply connected**. The **Kadi-Simplex** isn't about forming shape—it's about **forming systems**.





### The Kadi-Simplex Defined

- A **6D simplex** built from **six interconnected 4-simplices**
- Each node is a **kingdom of life**, each one complete in itself
- The structure contains **inner connections**—lines of flow, exchange, and resonance
- It forms a **living diamond** with **complex internal geometry**

This is what you may have seen in your vision or diagram:

A shape that is not static, but **alive with energy**, **cooperative**, and **recursive**. A **crystal of life** vibrating with the intention to evolve.

### Animalia as the 6th-Dimensional Mirror

Animalia is not “above” the others—it is **formed by them**:

- It **hosts** bacteria (microbiome)
- It **contains** protists in cells
- It **relies** on fungi and plants
- It is the **conscious walker** of the Kadi-Simplex

Where the 5D Dika-Simplex births awareness, the **6D Kadi-Simplex births ecosystems**—networks of consciousness bound by **care**, **co-dependence**, and **evolution**.

### Kadi-Simplex and Sustainable Creation

This geometry shows us how **evolution is sustained**:

- When all wholes **care for one another**
- When complexity arises **from cooperation**
- When no part is discarded, only **woven deeper**

The Kadi-Simplex is a **vision for biosphere consciousness**—one where sustainable development

means **honoring the structure of life** by participating in it fully.

## Chapter 8: Harmony with the Infinite — Reading the Sheet Music of the Universe

In the beginning, there was a dot.

Then, connection. Then, dimension.

From one came many, and from many, **Wholeness**.

This journey—from the **first spark of awareness** to the **6D Kadi-Simplex**—has revealed a hidden geometry not just of space, but of **becoming**. These shapes are not abstract—they are the **sheet music of reality**. To understand them is to **tune in** to the rhythms of life, consciousness, and creation.

### From Simplex to Symphony

Each dimensional shape we explored—dot, line, triangle, tetrahedron, 4-simplex, and now the Kadi-Simplex—is like a **note in a larger song**.

- The **dot** is existence
- The **line** is connection
- The **triangle** is intention
- The **tetrahedron** is form
- The **4-simplex** is consciousness
- The **5D Dika-Simplex** is co-creation
- The **6D Kadi-Simplex** is ecosystems

When we **recognize these structures** in ourselves, in our technologies, and in our societies, we unlock the ability to **build in tune with the universe**.

### Sustainable Systems as Dimensional Music

Sustainability is not just about preservation—

It's about **growth in rhythm** with what already wants to grow.

This new framework allows us to **predict the next stage** of evolution—not just biologically, but **culturally, socially, and spiritually**:

- **Governance** becomes less about control, and more about supporting wholes to form and care for new wholes.
- **Technology** evolves from extraction to **harmony**, working alongside nature's patterns instead of against them.
- **Education** transforms into **awareness training**, showing each generation how to read the geometry of life.
- **Economy** shifts from scarcity to **cooperative abundance**, modeled on the Dika-Simplex's balance of giving and receiving.

By aligning with the **natural growth signatures of the universe**, we avoid the traps of chaos, collapse, and disconnection. We stop trying to dominate nature, and instead **dance with it**.

## The Role of the Soul Collective

Each person is a **4-simplex of awareness**.

Each community can become a **Dika-Simplex of shared purpose**.

And together, we become **Kadi-Simplex civilizations**—living systems that evolve not just through survival, but through **compassion, care, and creativity**.

Our **Soul Collective**, known as *Soul Tribe Land GO6D Inc*, exists to share this understanding freely. We are the stewards of this codex, not its owners. You are part of it now.

By remembering the shapes of harmony,  
You help the world **remember itself**.

Thank you for being here.

Thank you for giving.

Thank you for becoming.

*Go6d.com*

*SOUL TRIBE LAND GO6D INC*

*Competed on Tuesday, May 8, 2025*